



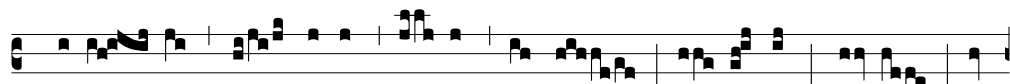
porta: i-psa por- tat Re-gem glo-ri- e nouo lumine: sub-



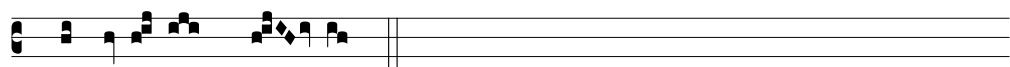
sistit uirgo, adducens in mani-bus Fi-li-um ante luci-fer-



um: quem accipi-ens Syme-on in ulnas su- as, predi-cauit

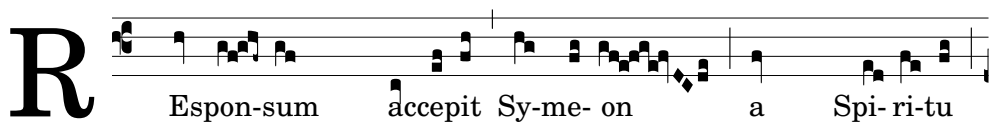


popu- lis Do- minum e- um esse ui- te et mor-tis, et



Saluato-rem mun- di.

*Hic fiat III stacio iuxta ecclesiam dum dicitur hoc Rꝫ:*



**R**

Espon-sum accepit Sy-me- on a Spi-ri-tu



Sancto, non ui-su-rum se mortem ni-si uide-ret Chri-stum



Do-mini. Et cum indu-cerent pu- e-rum in templum,